

## INVENTORY SHEET FOR GROUP NOMINATIONS: IDAHO STATE HISTORICAL SOCIETY, BOISE, IDAHO

NOMINATION: Idaho Falls Downtown multiple resource area  
(partial inventory: architecture)

SITE NAME: Idaho Falls City Building

SITE NUMBER: 1

LOCATION: 308 West C Street

OWNER'S NAME AND ADDRESS:

City of Idaho Falls

QUADRANGLE AND SCALE: Idaho Falls South, 7.5 minute      ACREAGE: less than one

VERBAL BOUNDARY DESCRIPTION:

The nomination includes the Idaho Falls City Building and the property on which it stands, lots 7 through and including 18, block 15, Holmes Addition to Idaho Falls.

UTM(S): 12/416110/4816000

DATE OR PERIOD: 1929-1930

ARCHITECT OR BUILDER: unknown

AREAS OF SIGNIFICANCE: architecture

EVALUATED LEVEL OF SIGNIFICANCE: state

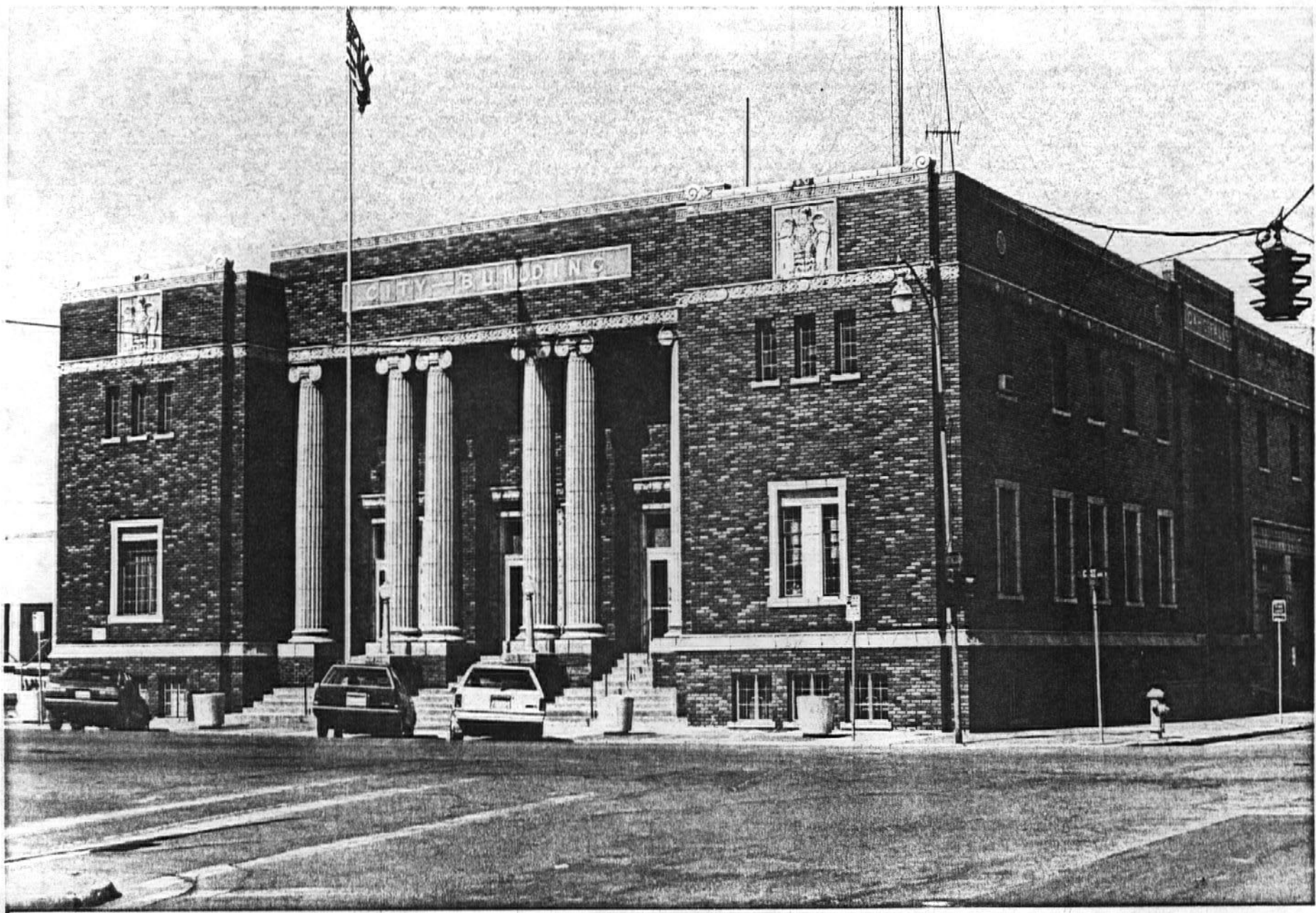
CONDITION: good, unaltered, original site

DESCRIPTION:

The Idaho Falls City Building is a two-story reinforced concrete structure on a raised basement story. It has a sandstone, terra cotta, and rose-colored brick veneer; the brick is laid in common bond. The building is rectangular with inset areas on the south and east exposures for entryways. In the south main entrance, this inset is supported by double fluted Ionic columns. Decorative bands of terra cotta glazed a light blue cap the roofline and demark the attic and outset watertable. These bands have low relief carving of curving and floral motifs. There is a legend in the attic story above the main entrance reading "City Building," which is flanked on both sides by sculptured eagles on a field of light blue. Three doors at the main entrance are reached by a set of steps. These doorways have heavy sculptured entablatures. The east facade has in its attic story the inscription "Idaho Falls," with an entablature below marked by Ionic pilasters. At the rear of this side are three garage doors for the city fire department, leading to a section of the building completed in 1929. The doors on this side are metal framed, possibly original. First-story windows are multipaned with outset stone surrounds. The narrow second-story windows are multipaned and have stone sills.

SIGNIFICANCE:

The Idaho Falls City Building is architecturally significant as an excellent and unaltered example of a monumental public building. This building is a rare example in Idaho of its type and style; few buildings in the state draw so explicitly from the Beaux Arts tradition. The City Building was erected during 1929 and 1930 and was one of many city improvements made in Idaho Falls during an era in which most Idaho towns experienced a lull in building activity.



Idaho Falls City Building (historic name)  
Site 1, Idaho Falls Downtown multiple resource area  
308 West C Street  
Idaho Falls, Bonneville County, Idaho

photograph by Jennifer Eastman Attebery

6 April 1983

Negative on file at Idaho State Historical Society

view from south

Photograph one of one