

## INVENTORY SHEET FOR GROUP NOMINATIONS: IDAHO STATE HISTORICAL SOCIETY, BOISE, IDAHO

NOMINATION: Idaho Falls Downtown multiple resource area  
(partial inventory: architecture)

SITE NAME: Kress Building

SITE NUMBER: 6

LOCATION: 451 North Park Avenue

OWNER'S NAME AND ADDRESS:

Park Professional Plaza Partnership  
P.O. Box 29  
Idaho Falls, ID 83402

QUADRANGLE AND SCALE: Idaho Falls South, 7.5 minute      ACREAGE: less than one

VERBAL BOUNDARY DESCRIPTION:

The nomination includes the Kress Building and the property on which it stands, the south half of lots 1 through and including 3, all in block 22, Railroad Addition, Idaho Falls.

UTM(S): 12/415920/4815900

DATE OR PERIOD: between 1930 and 1932      ARCHITECT OR BUILDER: unknown

AREAS OF SIGNIFICANCE: architecture

EVALUATED LEVEL OF SIGNIFICANCE: local

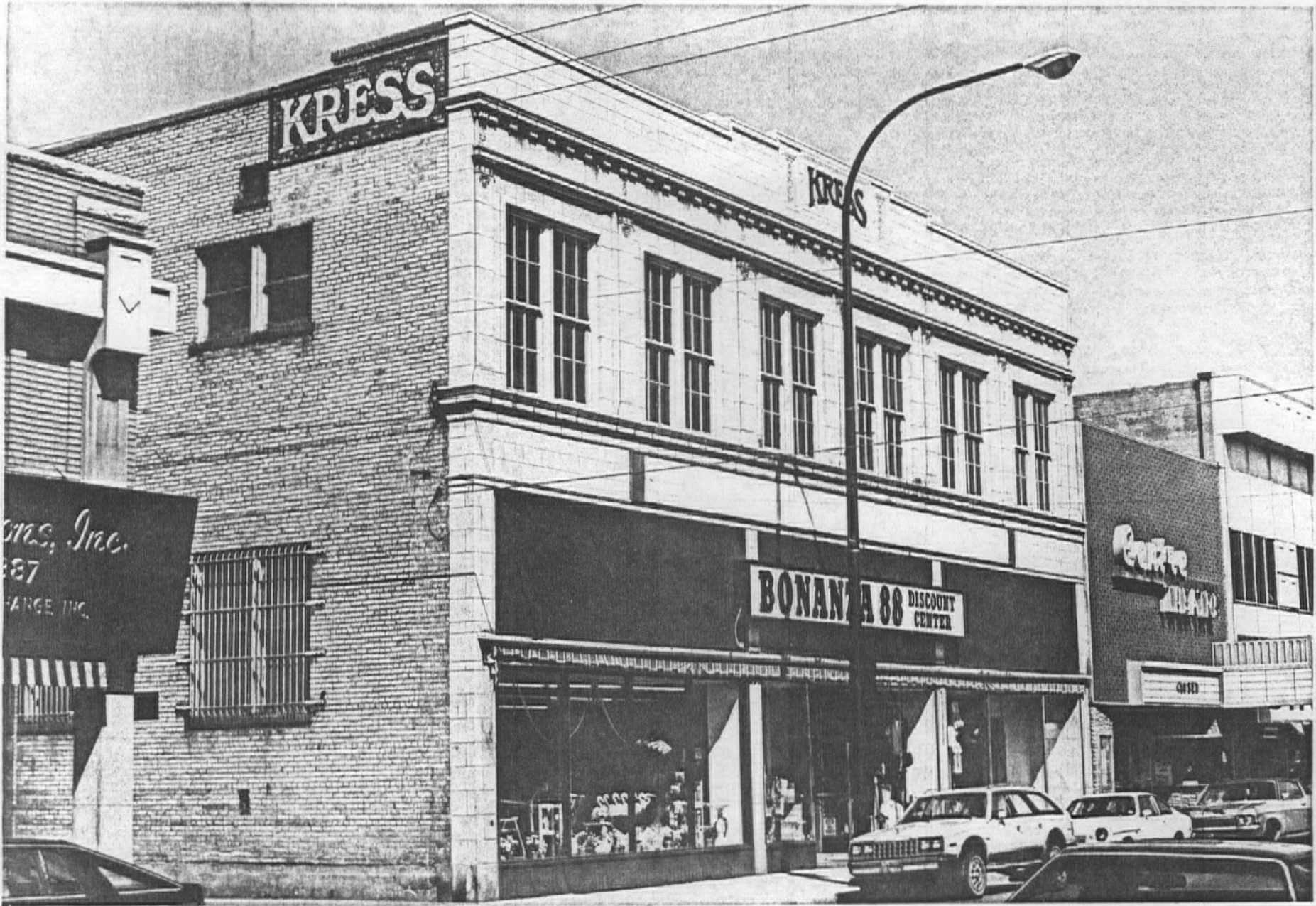
CONDITION: good, altered, original site

DESCRIPTION:

The Kress Building is a two-story brick structure with brick side walls and a terra cotta facade. The front is divided into six bays on the second story separated by pilasters with egg and dart and garlanded molded capitals. Each bay has double six-over-six double-hung sash windows. The second story is demarked by raised molding bands and a cornice with scroll-like dentils. On the attic parapet is the legend "Kress" in dark purple lettering, flanked by bas-relief terra cotta depicting heraldic devices. The storefront is slightly altered with new metal doorframes, a curved glass display, and wooden paneling below the windows. The mezzanine lights are masked with wood paneling. The metal sign above the mezzanine is probably an addition.

SIGNIFICANCE:

The Kress Building is a good and relatively unaltered regional example of the use of terra cotta as more than an occasional decorative material. Terra cotta-faced buildings are rare in Idaho; major towns usually have no more than one such commercial structure. The Kress Building is the only eligible building in the Idaho Falls nomination that makes such extensive use of this material. The building is chronologically the last commercial Renaissance Revival style building in the multiple resource nomination. It was built for S. H. Kress and Company between 1930 and 1932.



Kress Building  
Site 6, Idaho Falls Downtown multiple resource area  
451 North Park Avenue  
Idaho Falls, Bonneville County, Idaho

photograph by Jennifer Eastman Attebery

6 April 1983

Negative on file at Idaho State Historical Society

view from south

Photograph one of one